

CERTIFIED LAND CORNER RECORDATION

DESCRIPTION OF CORNER EVIDENCE FOUND, AND ORIGINAL RECORD (If known)

LOCATION
34 35
3 2
T.14N., R.63W.
6th P.M.

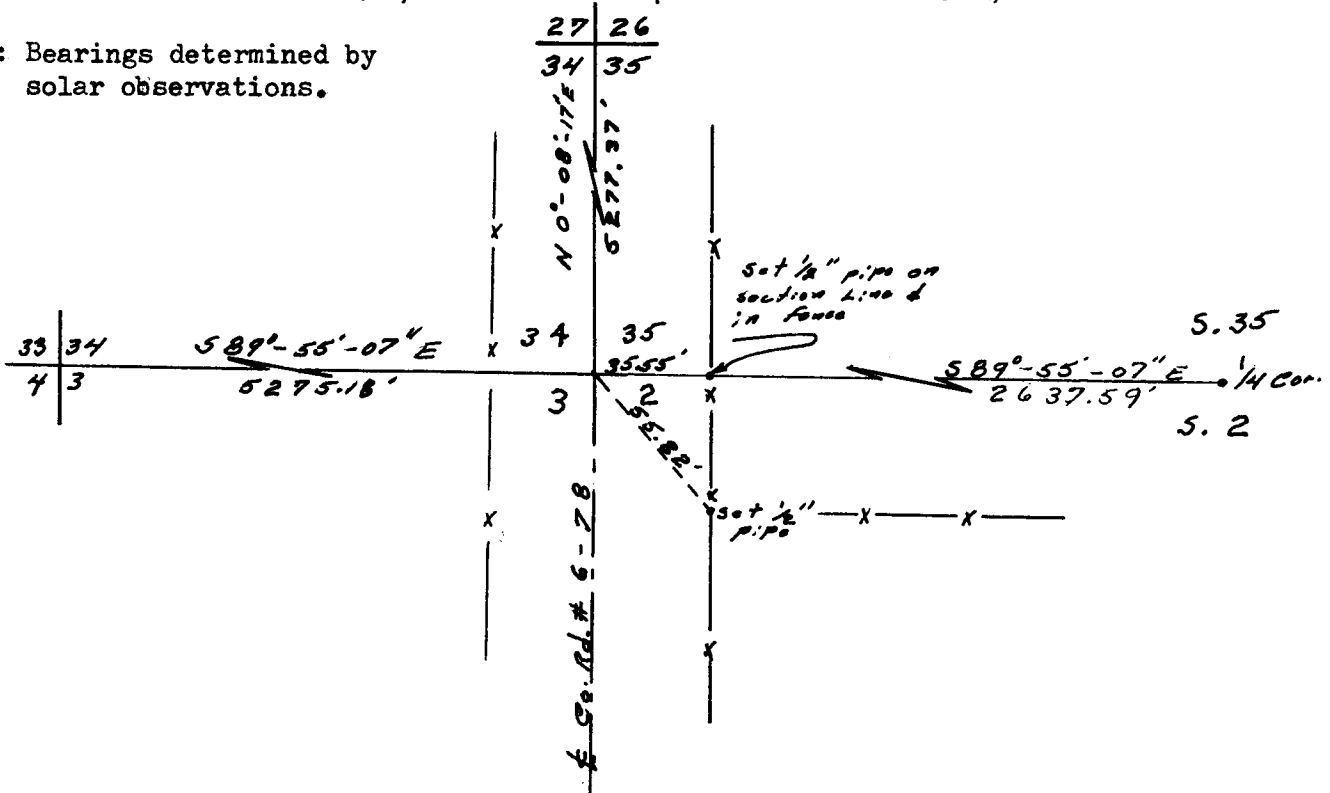
No evidence of original stone found.
Corner re-established by single proportionate method.
G.L.O. record - Limestone 16" x 12" x 6" .

DESCRIPTION OF MONUMENT AND ACCESSORIES ESTABLISHED
TO PERPETUATE THE ORIGINAL LOCATION OF THIS CORNER:

At the corner: Set 1/2" pipe 10" below surface of road.
Accessories: Set witness corners as shown in sketch.

SKETCH, WITH COURSE AND DISTANCE TO ADJACENT CORNER IF DETERMINED IN THIS SURVEY.
(May Sketch or Paste Reproduction on Reverse Side.)

Note: Bearings determined by solar observations.



I, Robert C. Corbet certify that I have carefully performed or reviewed the work done on the diagrammed corner as reported on this recordation form and approve the same.

Robert C. Corbet L.S. No. 495
Signature of Surveyor Registration No.

STATE OF WYOMING,
Office of Clerk and Recorder,
County of Laramie

This "corner record" was filed for record on the 9 day of August, 1973, was noted on the cross-index plat and is assigned page No. _____, in book No. _____.

John B. Heisman
County Official

Cross Index No. <u>217</u>	T. <u>14</u>	R. <u>63</u>	<u>6</u> Mer.
_____	T. _____	R. _____	Mer.
_____	T. _____	R. _____	Mer.
_____	T. _____	R. _____	Mer.
_____	T. _____	R. _____	Mer.
_____	T. _____	R. _____	Mer.
_____	T. _____	R. _____	Mer.

Photographed

Indexed

Posted

Assessor

The State of Wyoming }
County of Laramie } SS

This instrument was filed for record
at 1:14 o'clock P. M. on the

9 day of August
A. D. 19 33 and duly recorded in

Book _____ on page _____

[Handwritten Signature]

Register, Clerk & Ex-Officio Register of Deeds
[Signature] Deputy